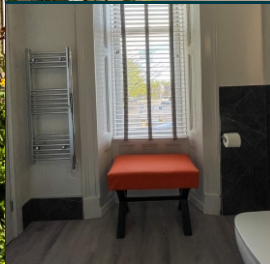


HERRIOTS HOUSE



Rooms & Private House Hire

Welcome to our house...

Sleeps 16 | Bedrooms 5 | Bathrooms 6 | Pets a maximum of 2

This detached, Victorian manor house sits in the heart of Skipton, backing onto the Leeds Liverpool canal, local park and 25 metres from the railway station, providing a truly magnificent escape. Boasting a boutique interior and great attention to detail, this Skipton property serves as a wonderful base for families, couples or groups of friends looking to relish in the excitement of this market town, with easy access to the extensive landscape of Yorkshire Dales.

Step inside and follow the Yorkshire flagstone flooring into the contemporary kitchen and dining area boasting a plethora of modern appliances amongst sleek units, a granite breakfast bar, two electric ovens, two fridge/freezers and two dishwashers, ensuring a truly stress-free cooking experience. Gather at the granite dining table, offering plenty of seating for everyone and toast to a long-awaited getaway before tucking into a hearty home-cooked meal.

Step back outside and wander into the stunning annex, housing two individual sitting rooms, one for those chilly evenings in front of a log burning stove lounging on a quirky swinging sofa, the other for a night in front of the 65" smart TV. There is also a shower room in this building for further convenience.

Return to the main house and take your pick from five immaculate bedrooms, each of which has been thoughtfully decorated with plush furnishings, Smart TVs, individually controlled heating, and beds draped in white linen, so sleeping is sure to come easy here.

Style quality & comfort





Space to relax & unwind



5 spacious en-suite bedrooms

Bedroom Configuration

1 x Family room with twin beds (zip/link, can be super king on request) and king-size with Smart TV and en-suite double shower, basin heated towel rail and WC

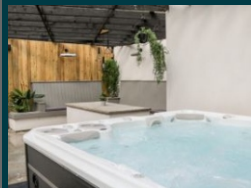
1 x Super-king-size with Smart TV and en-suite freestanding bath, rainfall shower, basin, heated towel rail and WC

1 x King-size with Smart TV and en-suite shower, basin heated towel rail and WC

2 x Ground-floor super-king-size (zip/link, can be twins on request) with Smart TV and en-suite double shower, basin, heated towel rail and WC, with optional extra bed.

Private access to outside area

Continuing to impress, head outside and relax within the covered patio area; at one side rests a large seating area with a granite centre unit, heaters and ambient lighting, enabling you to continue your conversations into the night, while at the other side there is a large, 8-seater hot tub and an external shower, perfect for a bubbly soak after a day of walking. To the front of the property there is a lawned area with an additional patio nestled amongst an area of climbing roses.



Everything you need and more...

Ground-floor shower room with walk-in shower, basin and WC (off the lounges)

Kitchen and large dining area

External annex with 2 x sitting rooms, 2 x sofa beds and woodburning stove

Electric central heating throughout (individually controlled)

2 x electric oven, hob, microwave, 2 x fridge, 2 x freezer, 2 x dishwasher, 6 x Smart TV,
WiFi

Fuel and power inc. in rent

Bed linen and towels inc. in rent

Ample off-road parking

Covered area with seating, outdoor heaters, ambient lighting, hot tub and external
shower

Secure bike storage

Washing machine and drying area

Two dogs welcome

Sorry, no smoking

Shop and pub 0.3 miles - Supermarket 2 minute walk - Highstreet 10 minute walk

Park and canal directly to rear

Note: No use of hot tub on departure day

This house is part of Herriots Hotel which is situated next door to the property and so great for popping over for a cocktail or two or enjoying the delicious dishes in the popular Rhubarb restaurant. This first-class holiday home ticks all the boxes for a superb getaway.



@Herriots Hotel

Broughton Road, Skipton BD23 1RT 01756 792781

email: house@herriotsforleisure.co.uk

